

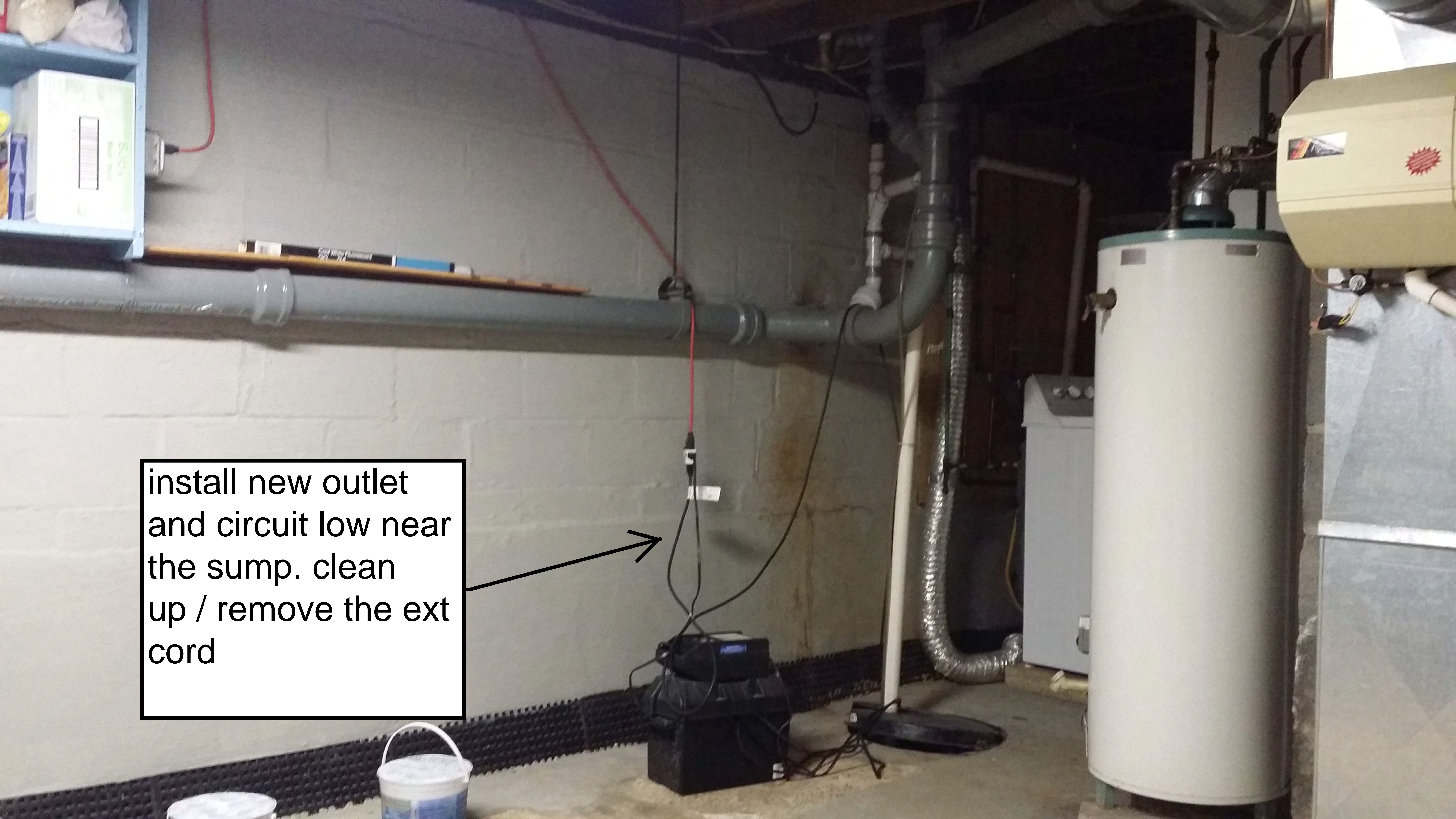
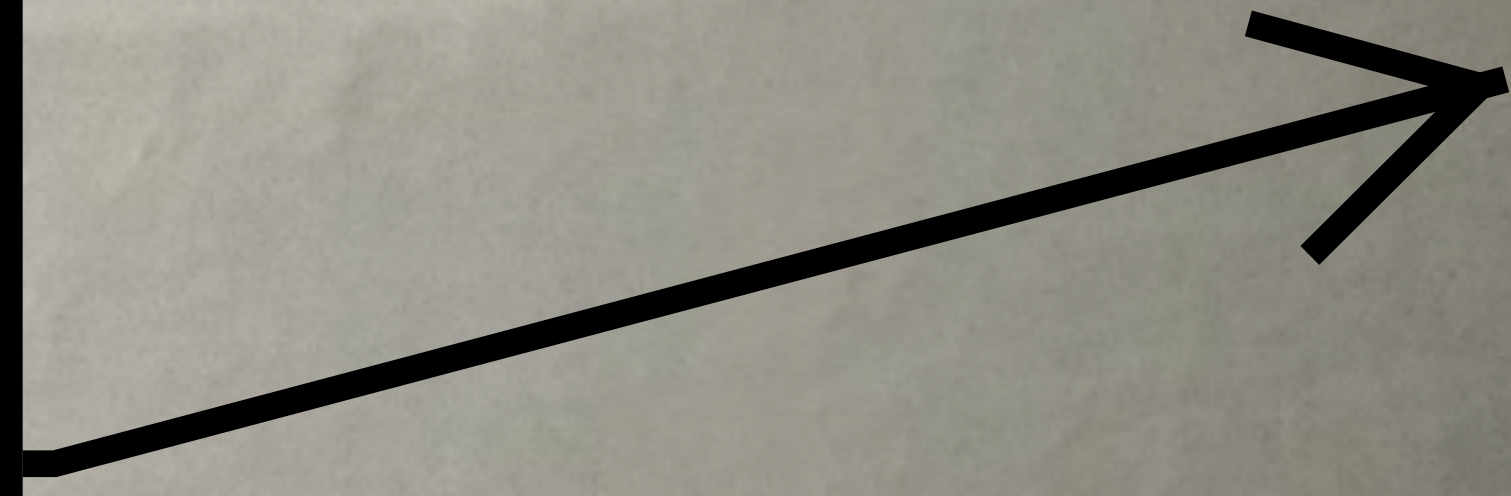
install
some
straps on
pipe



locate new panel in front of door.
perhaps install an lb on the conduit to reach new location?
or a junction box since the feed wires will mostly likely be short, just maintain bonding through to the panel



install new outlet
and circuit low near
the sump. clean
up / remove the ext
cord



feed to garage, if it is continuous you will need to pull out the uf and install all thhn. if not continuous i will need to discuss with customer to install a new conduit.



feed comes in
back here

